

SCADA OPC

How it works:

Software	Modul/Subsystem	Manufacturer
Matlab	OPC Client ↕	MathWorks Software
SCADA OPC	OPC Server SCADA Client ↕	Lucas-Nülle Software
SCADA	SCADA Server	

SCADA OPC is included in SCADA Viewer and SCADA Designer.

Copy the directory OPC from the installation source of SCADA to a local directory. It is recommended to use the LN directory "C:\Program Files (x86)\LN"!

Source:

Name	Date modified	Type	Size
Common	28/02/2018 11:48	File folder	
OPC	21/12/2017 11:49	File folder	
autorun.inf	06/02/2012 16:44	Setup Information	1 KB
LN.ico	09/06/2009 04:56	Icon	4 KB
Remove.cmd	06/07/2016 09:40	Windows Comma...	1 KB
Setup.exe	19/07/2016 06:46	Application	2,518 KB
Setup.ini	03/04/2014 10:00	INI File	1 KB
Thumbs.db	15/09/2015 13:37	Data Base File	11 KB
Watermark.bmp	09/11/2010 09:45	BMP File	170 KB

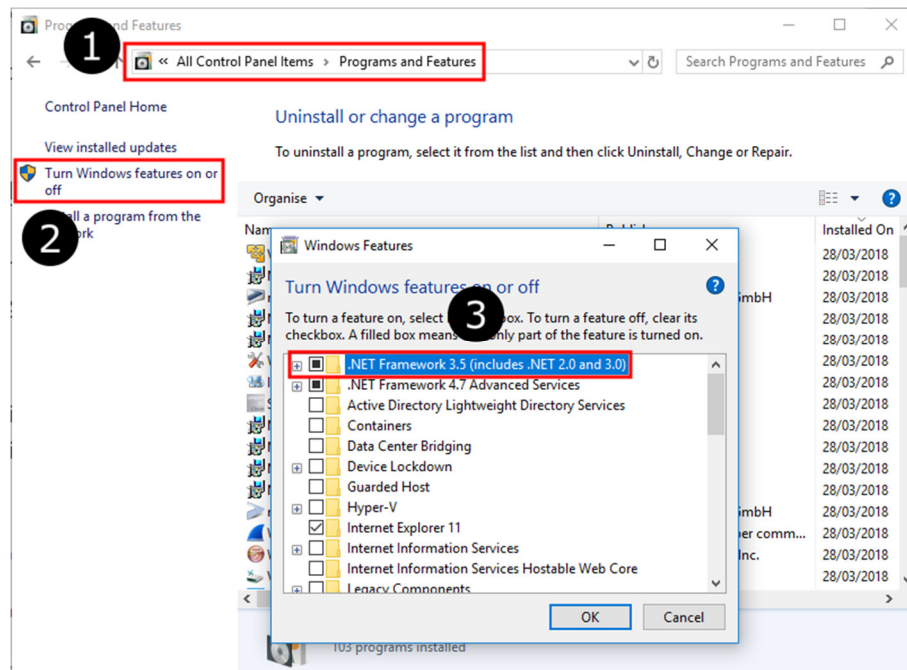
Recommended destination:

LN > This PC > Local Disk (C:) > Program Files (x86) > LN				
Name	Date modified	Type	Size	
ActiveServo	28/04/2017 12:15	File folder		
Classroom Manager	07/07/2017 12:23	File folder		
Drivers	21/03/2018 16:25	File folder		
Help Viewer	23/01/2018 11:10	File folder		
LabSoft	21/03/2018 16:25	File folder		
OPC	29/03/2018 17:06	File folder		
PlugIns	21/03/2018 16:24	File folder		
PowerLab	28/02/2018 12:01	File folder		
Solar Panel	28/04/2017 12:16	File folder		
VI-Starter	28/04/2017 12:15	File folder		
WindSim	28/04/2017 12:16	File folder		
Desktop.ini	09/06/2009 04:56	INI File	1 KB	
LN.ico	09/06/2009 04:56	Icon	4 KB	

Software requirements

NetFramework 2.0 or 3.5

Install NetFramework 2.0 or 3.5 in Windows features (internet required).



OPC Core Components Redistributable

Run one of the installations in the directory OPC.

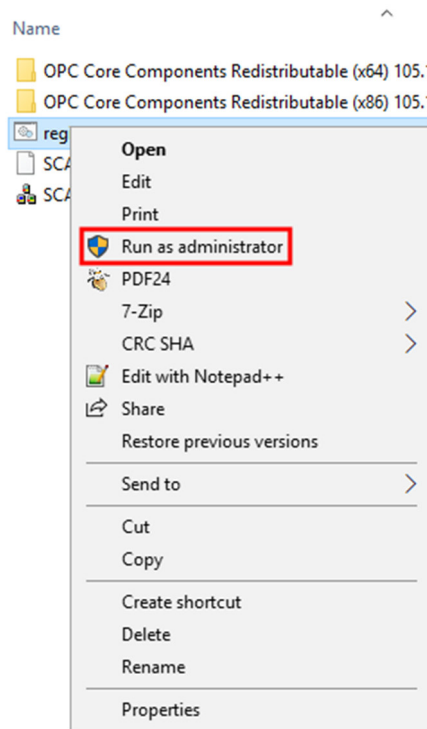
- (x64) for 64-bit Windows
- (x86) for 32-bit Windows

Name	Date modified	Type	Size
OPC Core Components Redistributable (x64) 105.1	21/12/2017 11:49	File folder	
OPC Core Components Redistributable (x86) 105.1	21/12/2017 11:49	File folder	
SCADA OPC.config	30/11/2017 09:13	CONFIG File	1 KB
SCADA OPC.exe	30/11/2017 09:08	Application	3,704 KB

Register SCADA_OPC.exe

Run register.bat in the directory OPC as Administrator.

Make sure you are in the local destination directory "C:\Program Files (x86)\LN\OPC"!



How to unregister/uninstall SCADA_OPC

You must unregister SCADA_OPC.exe with the Windows Command Prompt (CMD).

```
Microsoft Windows [Version 10.0.16299.309]
(c) 2017 Microsoft Corporation. All rights reserved.

C:\Users\schwarz>cd "c:\Program Files (x86)\LN\OPC"

c:\Program Files (x86)\LN\OPC>SCADA_OPC.exe /unregister

c:\Program Files (x86)\LN\OPC>
```

Now you can delete the directory "C:\Program Files (x86)\LN\OPC" to completely remove SCADA OPC.

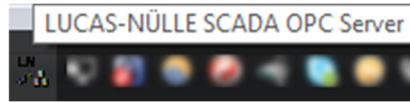
Windows Firewall Rules

Make sure the Windows firewall allows incoming communication if you are using SCADA or OPC over network.

Test the installation for localhost / 127.0.0.1

Use the SCADA samples in the directory samples to test the installation. The samples and the SCADA OPC are configured for localhost / 127.0.0.1 by default. They must run without any more configuration!

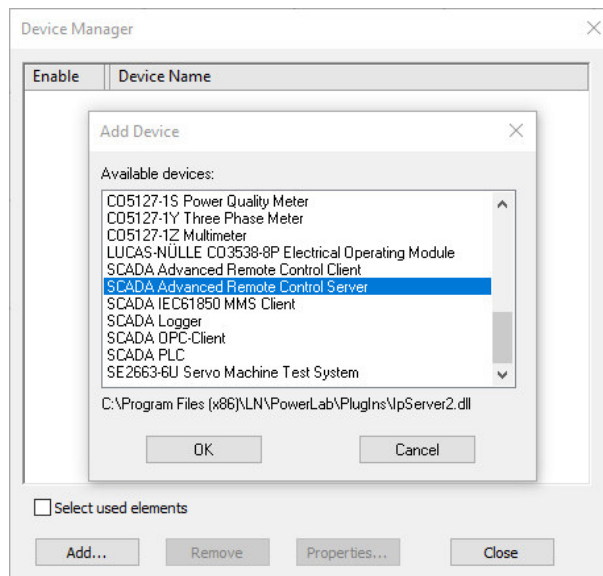
You don't need to start SCADA OPC Server. It will be started automatically in the background. You can check this in the Windows tray.



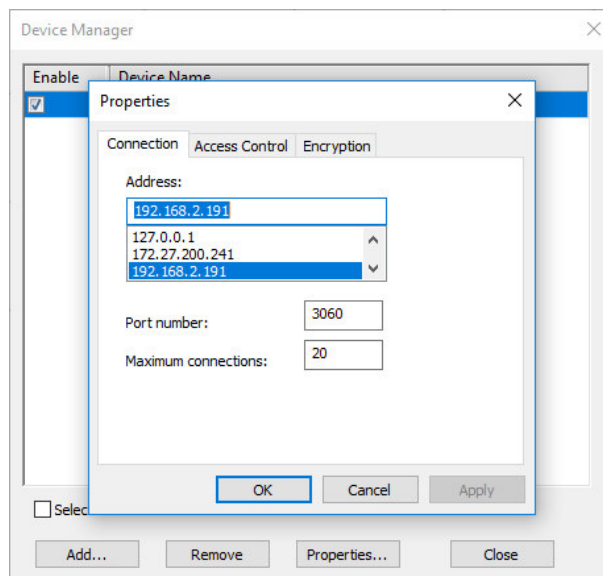
SCADA Advanced Remote Control Server

Add a SCADA Advanced Remote Control Server in the 🌀 device manager (F8) or use an existing server.

It is only possible to add/remove a device with SCADA Designer!



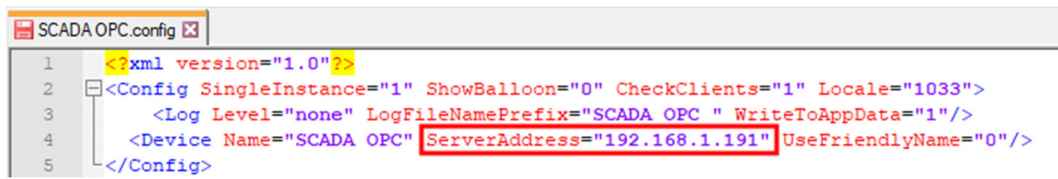
Configure the IP address of the server in Properties.... For network access it must be set the IP address of the pc. Otherwise you can set 127.0.0.1 for local use.



Close the device manager and ▶ start the surface

SCADA OPC

Edit the SCADA_OPC.config inside the directory "C:\Program Files (x86)\LN\OPC" with a text editor. Set there the IP address for SCADA Advanced Remote Control Server and save the file.



```
SCADA OPC.config
1  <?xml version="1.0"?>
2  <Config SingleInstance="1" ShowBalloon="0" CheckClients="1" Locale="1033">
3    <Log Level="none" LogFileNamePrefix="SCADA OPC " WriteToAppData="1"/>
4    <Device Name="SCADA OPC" ServerAddress="192.168.1.191" UseFriendlyName="0"/>
5  </Config>
```